

Enquire Data Sheet Disk brushes

Niebling Technische Bürsten GmbH

Name, Date

Company / Customer-ID

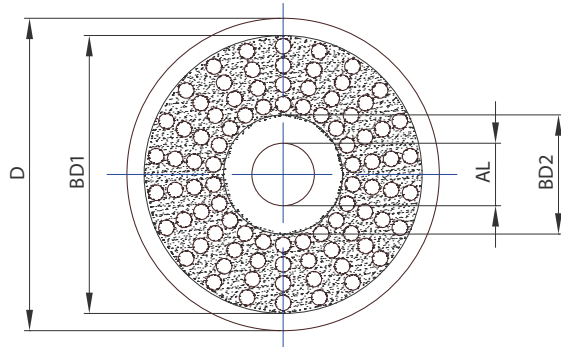
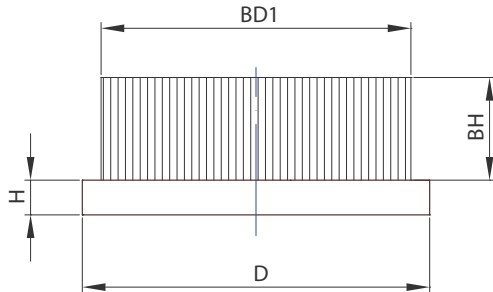
Address

City, ZIP, Country

Phone:, E-Mail

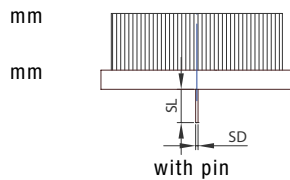
Industriestraße 12
91593 Burgbernheim
Germany

Tel.:+49(0)98 43 98 94-0
Fax:+49(0)98 43 98 94-20
www.niebling.com vertrieb@niebling.com



Diameter body \varnothing (D)	Body material	Bristles	Application area
mm	PA	PA	Food
External fill diameter \varnothing (BD1)	PP	PBT	Dry
mm	PE	PBT detectable	Wet
Internal fill diameter \varnothing (BD2)	POM	PP	Temperature range max. C°
mm	PVC	Abrasive filaments	Chemical resistance to <input type="text"/>
Body height (H)	PE-REG	SIC	
mm	Other	AL	Other <input type="text"/>
Axle bore \varnothing (AL)		Bronze	Color synthetic bristles
mm		Brass	
Fill length from body (BH)		Stainless steel	
mm		steel	Black
\varnothing Bundle bore size		Other	Transparent
\varnothing Bristle		Fibre (nature)	Other

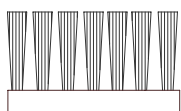
Special types:



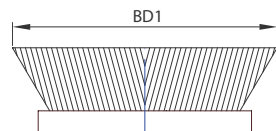
Length of pin (SL) mm

Diameter pin \varnothing (SD) mm

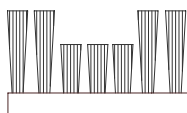
Fill options



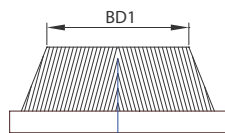
Straight



Tilted outwards



Stepped



Tilted inwards

Description/Comments: